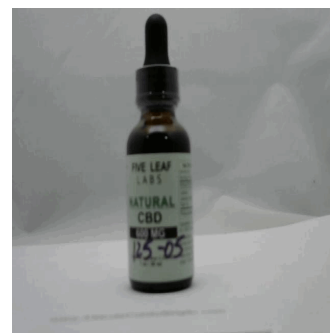




Customer: 5 Leaf Laboratories
Customer Sample ID: 0919T0600 Tincture 600mg
Laboratory Number: 19I0125-05
Servings per Container: 30
Density: 0.9148



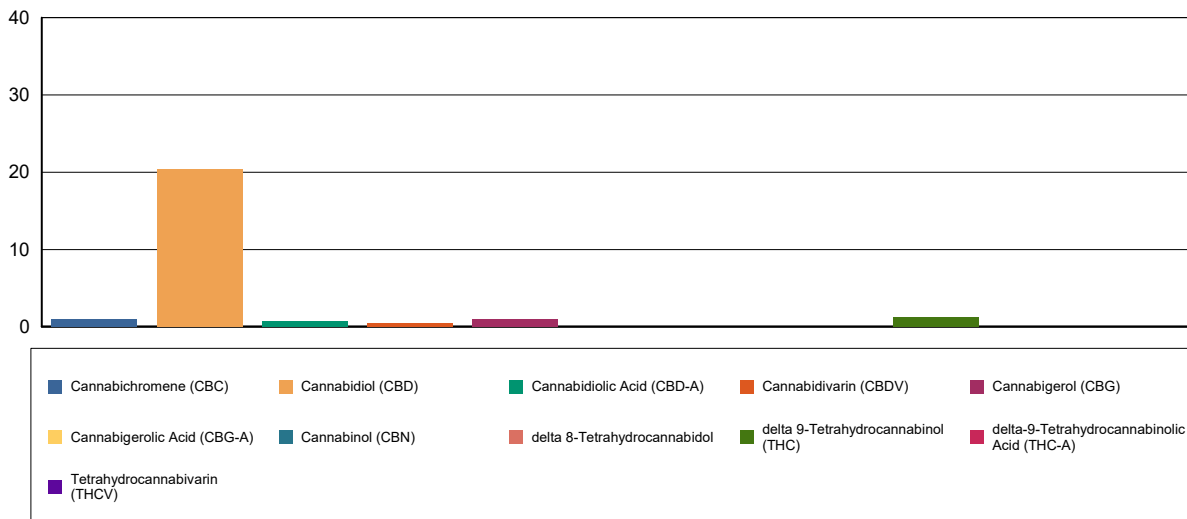
Cannabinoid Profile

Extraction Technician: DF
Analytical Chemist: GB

Extraction Date(s)	Analysis Date(s)
9/10/2019	9/10/2019

Cannabinoids (HPLC)		Results		
	LOD (mg/mL)	%	mg/mL	mg/bottle
Cannabidiol (CBD)		2.04	20.4	611
delta 9-Tetrahydrocannabinol (THC)		0.13	1.29	38.7
Cannabidiol (CBDV)		0.05	0.530	15.9
Cannabidiolic Acid (CBD-A)		0.07	0.715	21.4
Cannabigerolic Acid (CBG-A)	<0.090			
Cannabigerol (CBG)		0.10	1.000	30.0
Tetrahydrocannabivarin (THCV)	<0.090			
Cannabinol (CBN)	<0.090			
delta 8-Tetrahydrocannabinol	<0.090			
Cannabichromene (CBC)		0.11	1.07	32.0
delta-9-Tetrahydrocannabinolic Acid (THC-A)	<0.090			
Cannabinoids Total		%	mg/mL	
Max Active THC		0.13	1.29	
Max Active CBD		2.10	21.03	
T.Active Cannabinoids		2.37	23.7	
Total Cannabinoids		2.5	25	
Ratios				
16.36:1 CBD to THC		0.06:1 THC to CBD		

Cannabinoid (mg/mL)



Altitude Consulting, LLC utilizes NIST traceable Reference Standards and Certified Reference Material to calibrate analytical instruments along with proven analytical methods. The methods are applied in the most ethical manner following good laboratory practice guidelines. The results of this report are based solely on the sample submitted and cannot be reproduced.