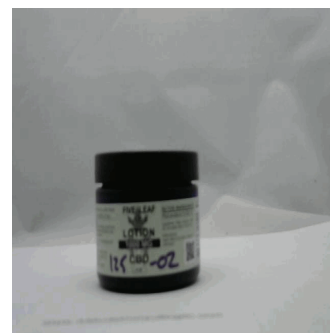




Customer: 5 Leaf Laboratories
Customer Sample ID: 0919C1000 Cream 1000mg
Laboratory Number: 19I0125-02
Servings per Container: 56.7



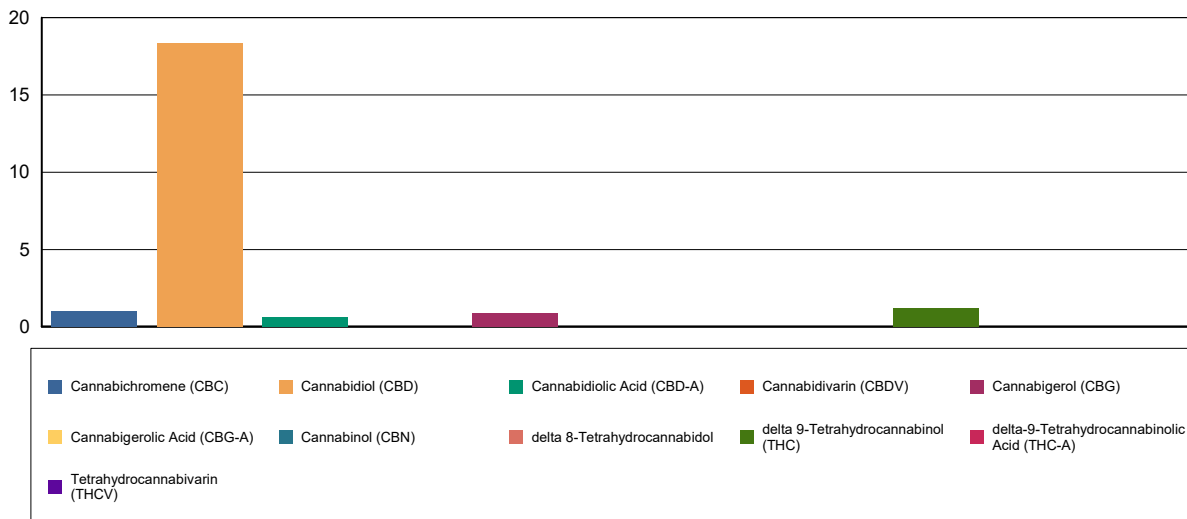
Cannabinoid Profile

Extraction Technician: DF
Analytical Chemist: GB

Extraction Date(s)	Analysis Date(s)
9/10/2019	9/10/2019

Cannabinoids (HPLC)		Results		
	LOD (mg/g)	%	mg/g	mg/container
Cannabidiol (CBD)	<0.20			
Cannabidiolic Acid (CBD-A)		0.06	0.632	35.8
Cannabigerolic Acid (CBG-A)	<0.20			
Cannabigerol (CBG)		0.09	0.867	49.2
Cannabidiol (CBD)		1.84	18.4	1040
Tetrahydrocannabivarin (THCV)	<0.20			
Cannabinol (CBN)	<0.20			
delta 9-Tetrahydrocannabinol (THC)		0.12	1.19	67.7
delta 8-Tetrahydrocannabidol	<0.20			
Cannabichromene (CBC)		0.10	0.993	56.3
delta-9-Tetrahydrocannabinolic Acid (THC-A)	<0.20			
Cannabinoids Total		%	mg/g	
Max Active THC		0.12	1.19	
Max Active CBD		1.90	18.95	
T.Active Cannabinoids		2.14	21.4	
Total Cannabinoids		2.2	22	
Ratios				
15.90:1 CBD to THC		0.06:1 THC to CBD		

Cannabinoid (mg/g)



Altitude Consulting, LLC utilizes NIST traceable Reference Standards and Certified Reference Material to calibrate analytical instruments along with proven analytical methods. The methods are applied in the most ethical manner following good laboratory practice guidelines. The results of this report are based solely on the sample submitted and cannot be reproduced.